

YOUNGTIMER TROPHY GRUPPO 2

2/3
APRILE
2022

Rules



Loc. RONCOLE VERDI 14/15
BUSSETO - PARMA - ITALY

Type
of
RACE



GRUPPO 2

YOUNGTIMER TROPHY

Endurance Slot Cars Championship with teams of 3 drivers. 6 races of 90 minutes each (3 with MINICARS and 3 with GROUP 2).

A score will be awarded at each race. The team with most points at the end of the 6 races wins the title.

The race area will consist in 2 tracks: 1 wooden track 8 lanes and 1 SCALEAUTO PRO-TRACK 6 lanes.

The championship will take place ins 2 days: 2 races on Saturday (1 MINICARS and 1 GROUP2) and 4 races on Sunday (2 MINICARS and 2 GROUP2).

Every team will have to present at "parc fermeèe" with 2 MINICARS models and 2 GROUP2 models and will race: MINICARS - race 1 and 2 with one model, race 3 and 4 with the other model, race 5 and 6 with the prefered model chosen from previous races.

For each race 8 teams will start at 8 lanes wooden track with GROUP2 cars and the other 8 teams will start at the SCALE-AUTO PRO-TRACK with the MINICARS.

The **BRM** models allowed to race for the 2 classes are:

MINICARS:

NSU TT



RENAULT R8 GORDINI



Mini Cooper



ABARTH 1000TCR



SIMCA 1000



A 112 ABARTH

GROUP 2:

Ford Escort MK I



Alfa Romeo GTA



Opel Kadett GTE



BMW 2002



SPORTS

Rules

1. Race direction – Judges – Technical Commission

- 1.1 Race direction: responsible for everything.
- 1.2 Race judges: the only ones who could take the cars.
- 1.3 Technical commissioners: insiders for technical inspections.

2. Behavior

- 2.1 All competitors are invited for maximum sportiness for the entire duration of the event, even outside the venue where the race takes place.
- 2.2 Smoking is forbidden inside the Arena.
- 2.3 Unsportsmanlike conduct will be sanctioned.

3. Type and duration of the races.

- 3.1 20 teams maximum will be admitted.
- 3.2 During the weekend it will take place a GROUP2/MINICARS championship with 6 races for each category.
- 3.3 Each race will last 90 minutes + lane changes (11 min. for manche).
- 3.4 Each team at the start must have one car for each class (Ex. Team XXX MINICARS: NSU TT; GROUP 2: BMW2002ti).
- 3.5 The ranking of each race will be based on the sum of the laps completed in the heats.
- 3.6 The score of each race will be assigned in the following way:
1° 100; 2° 95; 3° 90; 4° 85; 5° 81; 6° 77; 7° 73; 8° 69; 9° 66;

10° 63; ecc to always scale by one point.

- 3.7 The final classification will be drawn up by adding together the points obtained in each race.
The same score will be classified in advance (best result -> maximum total laps -> maximum lap 1 track -> best fastest lap).

4. Teams – Driving shifts – Change Drivers

- 4.1 The teams must have 3 drivers.
- 4.2 Each driver has to race for each race a number of heats between 2 and 3.
- 4.3 Each race will consist in 10 manches of 11 minutes + 2 minutes lane change.
- 4.4 On the driving platforms must stand only one driver for each team and nobody else could go there for any reason.
- 4.5 The driver changing must be done at the end of the manche during the lane changing. The driver who finish his shift comes down from the driving station and only when it's free the driver who start the following shift can go there.
- 4.6 Infractions during the lane changing will be penalized with 10 laps.
- 4.7 The controller could be leaved plugged.
- 4.8 The numbers of shifts of each driver will be checked by cameras.

5. Marshall

- 5.1 The Marshall must be part of the team.
- 5.2 During the free practice, at the driving station must be only one driver per team with his marshall on the same track and same position of the number of lane of the driver. Both of them must have their identification badge with race number. During the free practice each team will take care of moving the cars during the lane changing.
- 5.3 During the free practice the Marshall must be at the assigned station; there will not be any type of advise.
- 5.4 The Marshall must be at his station 1 minute before the starting of the heat.
- 5.5 The absence of the Marshall will be penalized by Race Direction with 10 laps.
- 5.6 The Marshall can't do any type of work on the cars. Except for the braids fixing to explicit request by the driver in case the car will not run.

6. Maintenance and repair

- 6.1 For maintenance and/or repairing operations the mechanic of the team will make a first request to a race judge and then it will bring back the car on track on the pit-lane.
- 6.2 If the car will stop on the track, the marshalls will give to the box-table and after the repair the car will go back on track on the pit-lane.
- 6.3 In the box area it will be allowed only one mechanic to work on the

car. It could be a member of another team.

- 6.4 Avio, lubricants and rags will be supplied by organisers.
- 6.5 Any necessary spare parts during the race must be checked before being assembled except from the motor and tires that will supplied by the race commissioner.
- 6.6 Gli interventi sulla vettura vengono effettuati solo a gara effettivamente in corso, con corrente in pista (NO durante i cambi corsia o durante eventuali pause nel corso di una manche).

7. Technical inspections

- 7.1 Cars must be presented to Closed Park with the verification cards (one per model). They must have the body separated from the chassis with rubber covers and screws assembled. The body must have the identification stickers and forms with race number supplied by the organization (a number for each side and a sticker for the windscreen with Team name).
The chassis must be without the motor.
The rear wheels must be without the tires.
- 7.2 The technical inspections will be done by the technical commission.
- 7.3 The verified and ready models will be taken by the race commissioners. At that time it will not be allowed anymore to touch the track.
- 7.4 The models, even if they have already passed the technical inspections, at any time they could be verified by one race commissioner (car on race or on park closed).

SPORTS

Rules

- 7.5 From the beginning of the race and until 15 minutes after the end, the Technical Commission could verify a car after written request by a team (complaint). The verification will take place during the lane changing and not during the race time.
In the event the car that have been verified will result regular the complaining team will be penalized by 10 laps and his car will be verified.

8. Penalties

- 8.1 The penalties, decided by the Race Direction, will be proportionate to the gravity of the infringemnets of the rules.
- 8.2 Failure with the guide table, using magnets, using prohibited liquids and products, repair done outside the "box table" will be penalized with the DISQUALIFICATION of the team.
- 8.3 Smoking inside the Arena will be penalised with 5 laps.
- 8.4 Infringements during the lane changing or during Marshall shift will be penalized with 10 laps.

9. Free Practice

- 9.1 The free practice will be one shift on each 20 lanes.
- 9.2 There will be heats of 6 minutes including lane changing where each time must occupy only one lane.

- 9.3 After the lane changing the team will go to the following lane.

10. Communications

- 10.1 The Race direction communications will be made known by microphone.
- 10.2 The captain of the teams will be responsible for the communication.

11. Starting grid

- 11.1 The starting grid and class will be decided by a randow draw. In the 2nd race, when you'll change track/class the grid will be the same. In the next races there will be the re-alignment, afre race 2 and race 4, based on the actual ranking (sum points race 1 and 2).
- 11.2 The team with the best ranking will start in lane 1. The others will be consecutively on the same track.

Introduction

This regulation specifies in detail the features and components that the cars must respect.

Changes not specified in the rules are prohibited.

On some models we clarify the allowed changes.

During the technical inspections and the races, the only allowed lubricants will be supplied by the organization.

Even if there will be supplied some soldering/welders the organization will not be responsible for their malfunction.

Each team should have his own during verification and race.

The use of a free component doesn't imply any change, replacement or omission that is not specified in these rules.

TECHNICAL Rules

Supply of motors and tires

The organization will drawn for each model:

1 original motor **BRM-blue** 19.000rpm - **BRM s-417**;

1 Nylon Pinion 12T **BRM s-420** diameter 6,8mm;

1 Nylon Pinion 11T **BRM s-420S** diameter 6,4mm

Rear tires: **BRM s-404** (MINICARS), **BRM s-404k** (GROUP 2)

s-404M (Mini Cooper - A112 with wheels S-402MC)



S-402 - Wheels



S-404
Rear tyres

S-402MC - Wheels



S-404M
Rear tyres (x2)

The tires and motor assembling will be in "Park closed".

The motors will be selected by the organization checking rpm and energy to be most equal as possible.

TECHNICAL

Rules

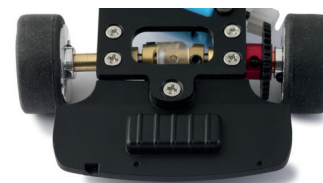
1. Maximum track

- 1.1 The rims can't be out from the wheel arches (view from the top).



2. Chassis

- 2.1 Each model must have his own specific chassis (internal/external).
- 2.2 The 2 chassis must be fixed using the brass BRM nuts original **s-415** (h 1.5 mm) or **s-415a** (1.0 mm no movement), **s-415b** (h 2.0 mm), **s-415c** (h 2.5 mm) o **s-415d** (h 3.0 mm).
- 2.3 The rear plastic part of the chassis must be assembled (except Mini Cooper).



3. Motor holder

3.1 The only allowed motor holder is the original **BRM s-413** + photoetch.

4. Brass joint – Axle holders

4.1 MINICARS: Brass joint original **BRM s-414**.

4.2 MINICARS: Rear brass axle holders **S-412** (large), **S-412F** (narrow) or aluminum axle holder double bearings **S-412S** (camber).

GROUP2: Rear stock axle holders BRM: Kadett GT/E S-412K, Alfa GTA/BMW2002 S-412A, Escort MKI **S-412E** (straight).

4.3 MINICARS: Front original axle holders BRM **S-411** or **S-411M** (Mini Cooper-A112 independent axle) (straight)

GROUP2: Front original axle holders BRM: Kadett GT/E **S-411K**, Alfa GTA/BMW2002 **S-411A**, Escort MKI **S-411E** (camber).

4.4 For the MINICARS class you can assemble the axle holders independent wheels **S-411M** on all the models.

s-413



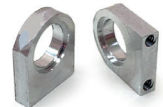
s-414



s-412f



s-412s



s-412k



s-411



s-411m



s-411k

5. Axles – Bearings - Spacers

5.1 Front axle free

A112 / Mini Cooper: front semi-axle **BRM S-416M** or axle with stopper.

GROUP 2: front semi-axle **BRM S-416K/416A** or axle with stopper.

5.2 MINICARS: Rear axle free or semi-axle **BRM S-416J / S-416** (included also front 56mm axle)

GROUP2: Rear axle free or BRM axle 58mm **S-416KR**.

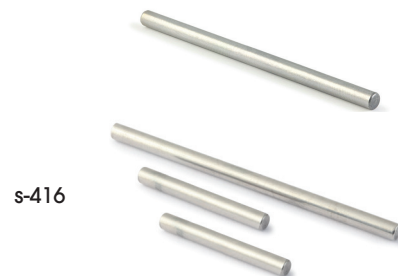
5.3 To use the front independent axle holders **BRM s-411m**, use semi-axles **BRM s-416m**.

5.4 MINICARS: Brass original bearings **BRM s-409**

5.5 Free ball bearings or **BRM S-410**

5.6 Free spacers for 3mm axle.

5.7 It's allowed to use stoppers for 3mm axle.



6. Spur gear

6.1 Original spur gear 33T **BRM s-419** or new Ergal **BRM s-419a**.



7. Pick-up

7.1 Pick-up original **BRM s-026ss**.



7.2 Allowed Pick-up REVOSLOT rs210 - rs210w.



7.3 It's allowed remove the spring and reduce the height of the blade.



TECHNICAL

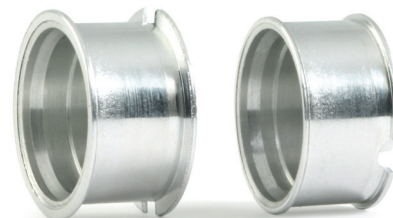
Rules

MODEL	FRONT WHEELS	REAR WHEELS	Ø
Mini Cooper	s-402m / 402 mc	s-402m / 402 mc	16,8 mm / 13,7 mm
Simca 1000	s-402 / 402s	s-402 / 402s	17,0 mm
NSU TT	s-402	s-402	17,0 mm
Abarth 1000 TCR	s-402f	s-402fr	15,5 mm
Renault Gordini r8	s-402	s-402	17,0 mm
A112 Abarth	s-402s / 402 mc	s-402s / 402 mc	17,0 mm / 13,7 mm
Opel Kadett GTE	s-402kf	s-402kr	16,7 ant. - 17,3 post.
Escort MK I	s-402kf	s-402kr	16,7 ant. - 17,3 post.
Alfa GTA	s-402kf	s-402kr	16,7 ant. - 17,3 post.
BMW 2002	s-402kf	s-402kr	16,7 ant. - 17,3 post.

8. Wheels - Inserts

8.1 See the wheels tabel

8.2 The wheel inserts are mandatory but you can interchange them between the models but they must be the same type on the 4 wheels



9. Wheels - Front tyres

- 9.1 Front tires **BRM S-403** (original on wheel Ø 17mm)
Front tires **BRM S-403S** (lowered on wheel Ø 16.8/17mm)
Front tires **BRM S-403F** (original on wheel Ø 15.5mm)
Front tires **BRM S-403FL** (lowered on wheel Ø 15.5mm)
Front tires **BRM S-403K** (for all the GROUP2 cars on wheel Ø 16.7mm)
Front tires **BRM S-403M** (for Mini and A112 with wheels S-402MC Ø 13.7mm).
- 9.2 When the model is ready during the verification the front rims must touch the track

10. Braids – Motor wires

- 10.1 Free braids and motor wires.
- 10.2 To fix the wires to the guide it's allowed to use grub screws or cable eyelets.
- 10.3 You can fix the wires on the chassis



s-403

s-403s



s-403f

s-403fl

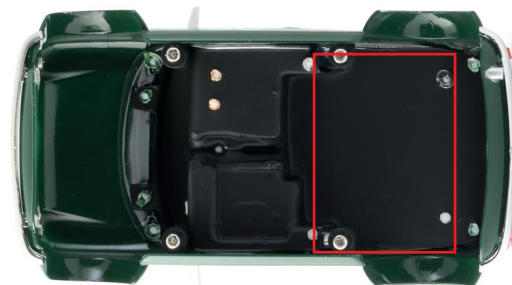
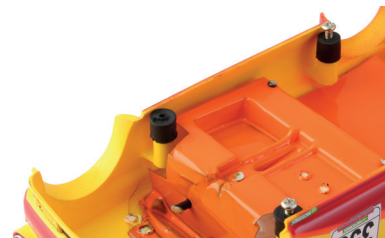
TECHNICAL

Rules

MODEL	WEIGHT (without rubber and screws)
Mini Cooper	34g
Simca 1000	46g
NSU TT	43g
Abarth 1000 TCR	35g
A 112 Abarth	43g
Renault Gordini r8	41g
Opel Kadett GTE	45g
Alfa GTA	42g
Escort MKI	42g
BMW 2002	45g

11. Body

- 11.1 At the start the model must have all his parts except for wipers, hooks and mirrors).
- 11.2 Mandatory the rubber covers for body posts **BRM S-013R, S-013RA, S-013RB** or **S-013RC**.
- 11.3 It's allowed to change the height of the body adding spacers inside the rubber covers using brass spacers of 0.5mm **BRM s-011c** or 1.0mm **BRM s-011d**.
- 11.4 The fixing body screws must be the original **S-421B** or **S-421A** (M2x6 sink head for 1.3mm allen key) or the Revoslot **RS213B** (1.5mm allen key).
- 11.5 Weight bodies, see the list on the right.
- 11.6 If it's necessary add weight to reach the minimum weight, it must be located on the red area under the cockpit.. (see photo)
- 11.7 To facilitate the assembling of the cockpit it's possible cut the legs of the driver from the knee.



12. Body exceptions

Abarth 1000 TCR

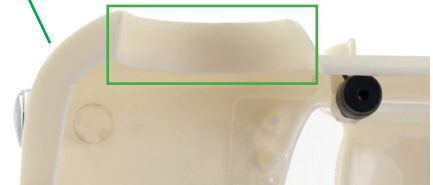
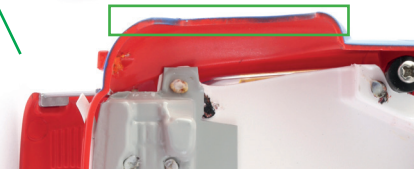
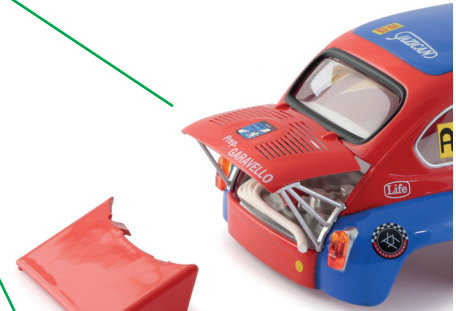
- 12.1 It's allowed to use both types of rear bonnets and to not use the original side mounts. The rear bonnet must be kept open like the original model.
- 12.2 It's allowed to scratch material inside the rear wheel arch to get a better rolling of the rear tyre.

Simca 1000

- 12.3 It's allowed to scratch material inside the rear wheel arch to get a better rolling of the rear tyre.

BMW 2002

- 12.4 You can replace the whole BMW cockpit using a full lexan cockpit one like the SC7902 or one similar.
You can remove the rear black plastic part from the body.





GRUPPO 2

HISTORICAL CHAMPIONSHIP



SLOT_UP A.S.D. - Loc. RONCOLE VERDI 14/15 - BUSSETO - PARMA - ITALY